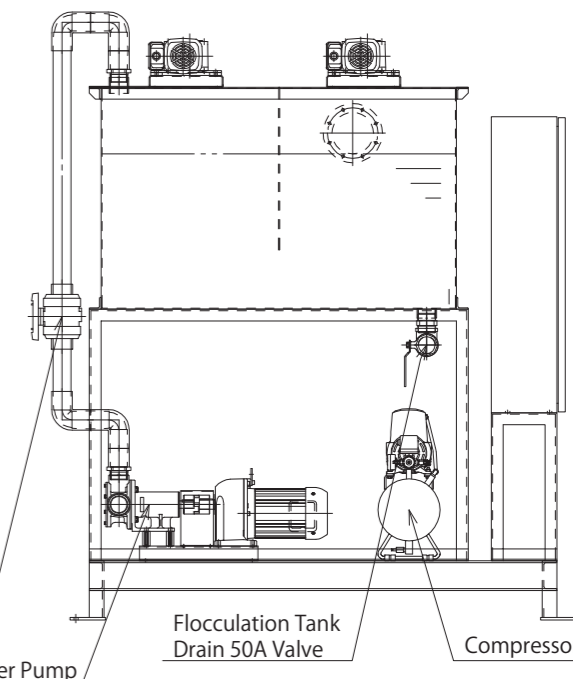
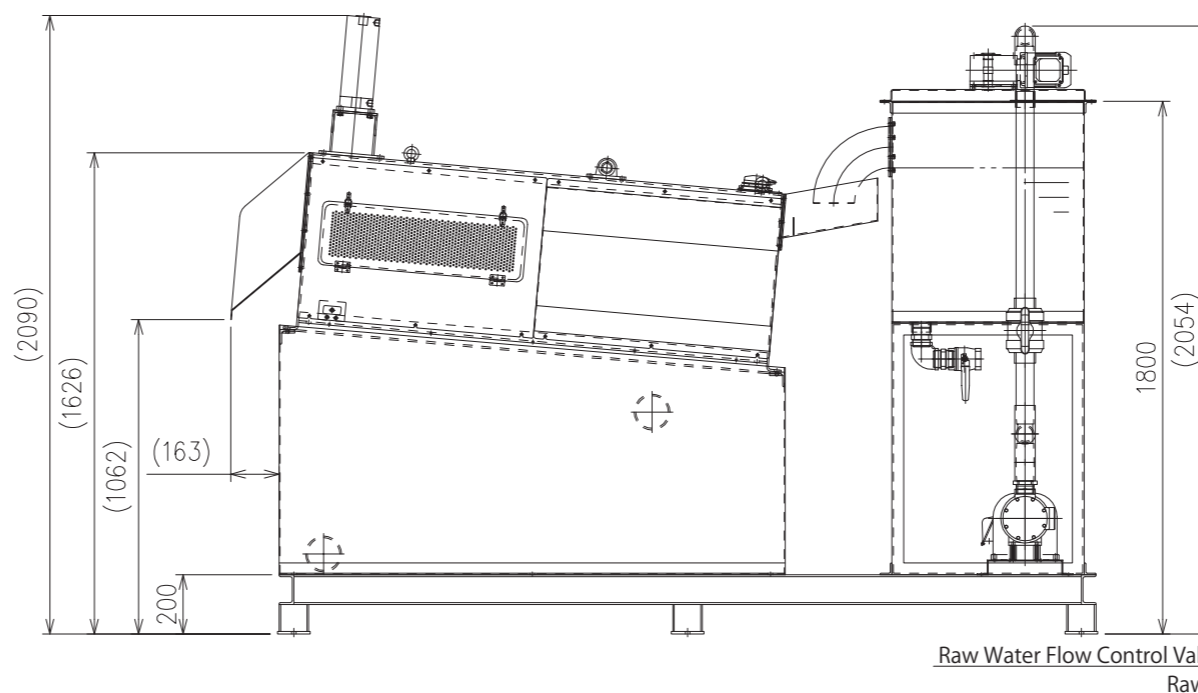
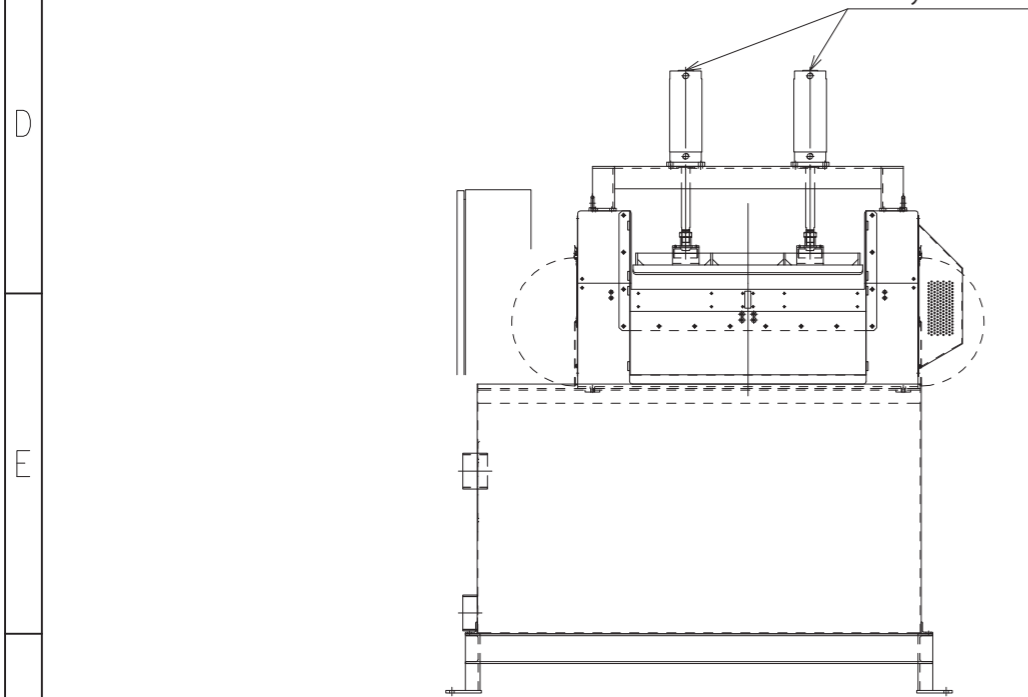
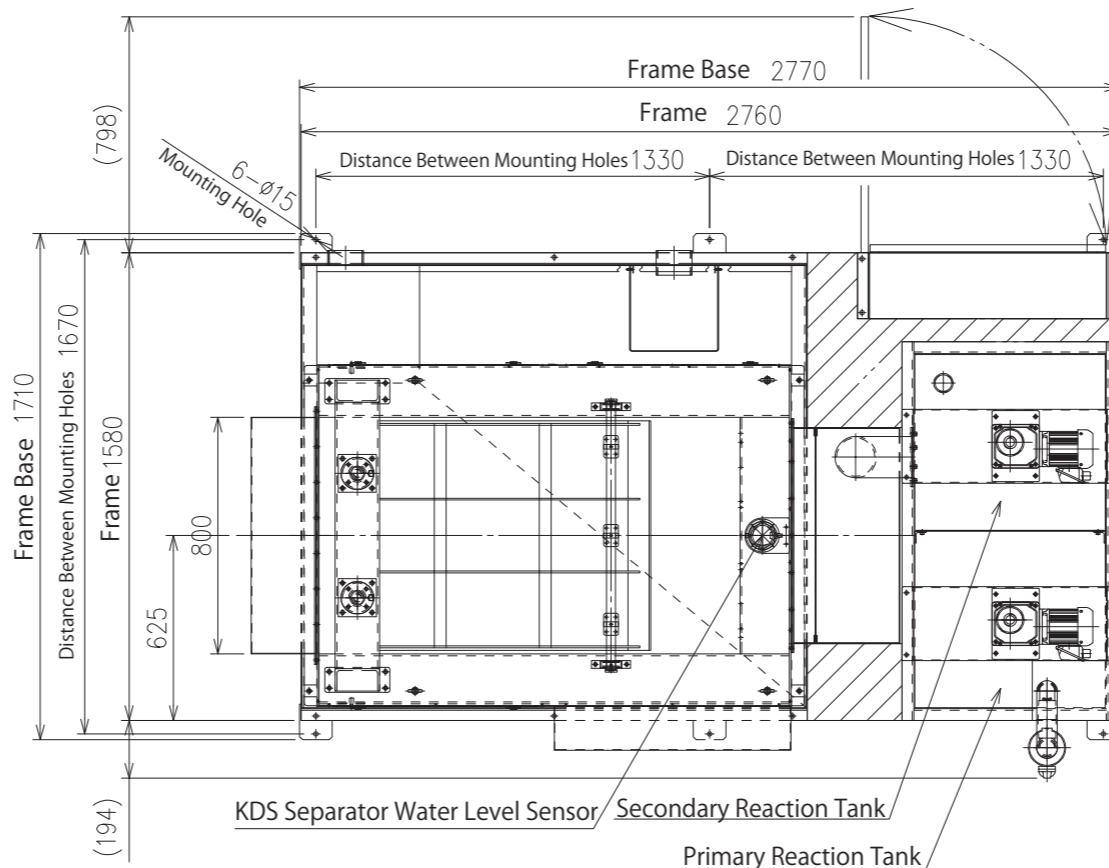
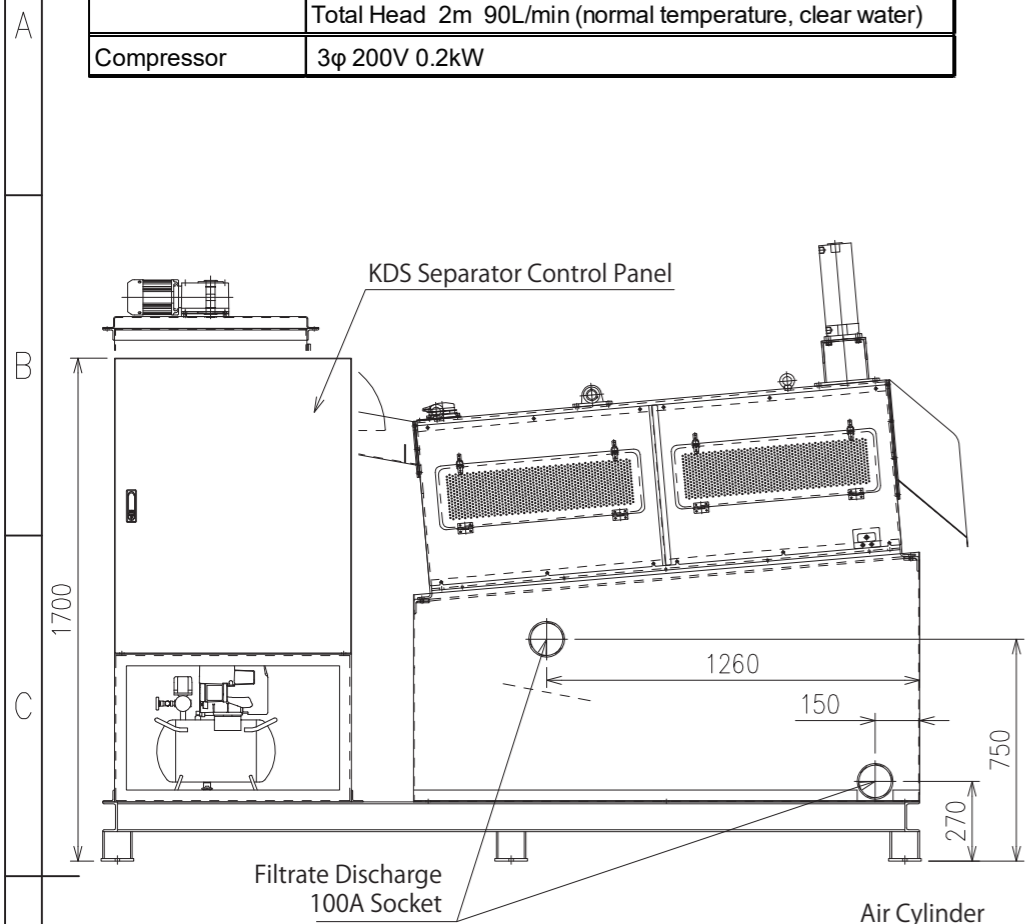


Device	Specification
Raw Water Pump	FG50-S7RC 3φ 200V 1.5kW Reduction Gear Ratio 1/3
	Rated Current Value 6.7A(50Hz), 6.1A(60Hz)
	Total Head 2m 90L/min (normal temperature, clear water)
Compressor	3φ 200V 0.2kW

Device	Specification	
KDS Separator	Model SS-811DK	
	Casing Material: SUS 304 Thickness: 6.0mm	
	Rotating Shaft Material: SUS 304 (38 shafts)	
	Screen	Flow Passage Width 380mm
		Rotating Oval Plates 11 rows (Material: SUS301-CSP t0.5)
	Drive Unit	Gap 1.0mm
		Gear Motor
		3φ 200V 0.75kw
		Reduction Gear Ratio 1/240
		Revolution Speed 6.0r/min(50Hz), 7.2r/min(60Hz)
Flocculation Tank	Rated Current Value 4.29A(50Hz), 3.73A(60Hz)	
	Class E Insulation, TEFC Outdoor Type	
Painting Colour : Manufacturer Standard		
Squeeze Method Air Cylinder (φ100x2)		
Primary Reaction Tank Approx. Capacity 200L (Water Level 525)		
600x650xH750		
3φ 200V 0.4kW (50Hz/60Hz), Reduction Gear Ratio 1/30		
Rated Current Value 2.2A(50Hz), 2.0A(60Hz)		
Primary Reaction Tank Approx. Capacity 200L (Water Level 525)		
600x650xH750		
3φ 200V 0.4kW (50Hz/60Hz), Reduction Gear Ratio 1/30		
Rated Current Value 2.2A(50Hz), 2.0A(60Hz)		



Drawing for Reference

The drawing is for reference only and subject to change without notice.

MARK	年月日 DATE	記事 CONTENT	訂正者 REVISED	承認 APPROVED
△	-	-	-	-
△	-	-	-	-
△	-	-	-	-
△	-	-	-	-


**株式会社 研電社**  
 KENDENSHA Co.,Ltd

品番/ITEM NO.	型式/MODEL	図面名称/DRAWING NAME	装置名称/UNIT NAME	単位 UNITS	尺度 SCALE	サイズ SIZE	変更回数 REV.
-	SS-811DK	Outline Drawing	SS-811D Dewatering System	mm	1:25	A3	△
工番/JOB NO.	図面番号/DRAWING NO.	御客様社名/CLIENT	投影法 PROJECTION	年月日 DATE			
-	-	-	第一角法	2021-01-06			