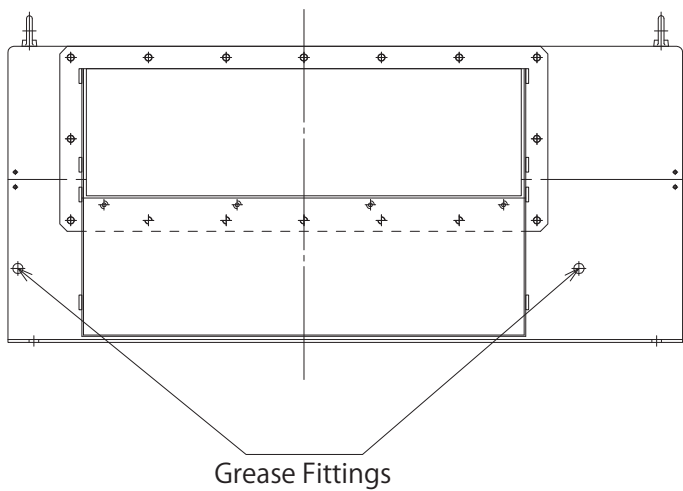
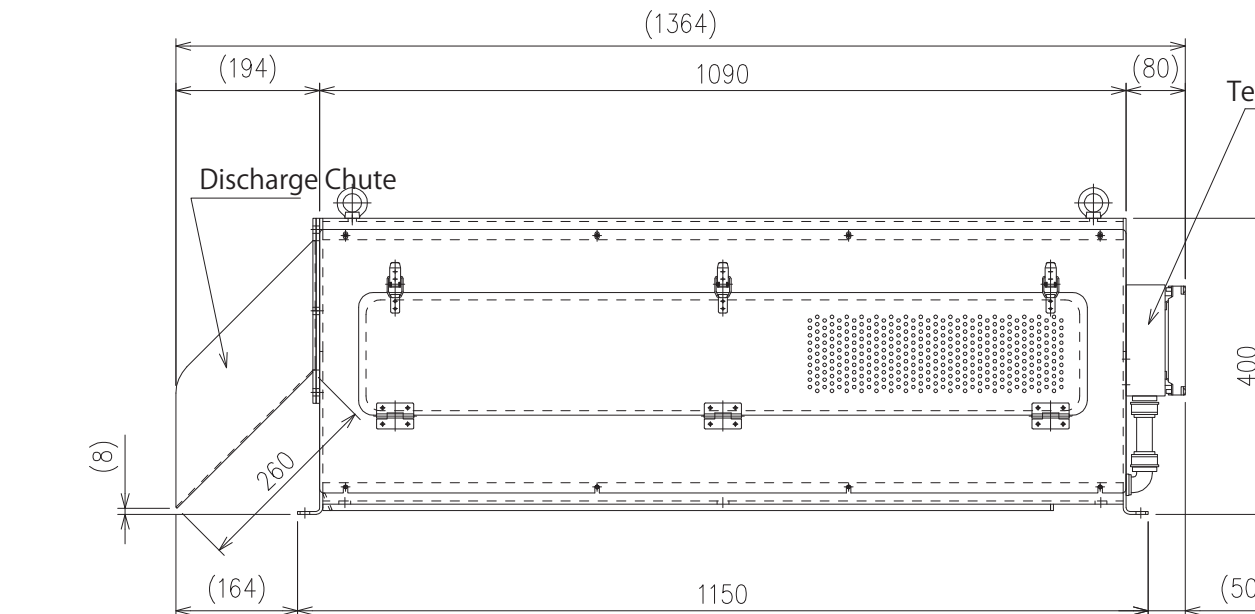
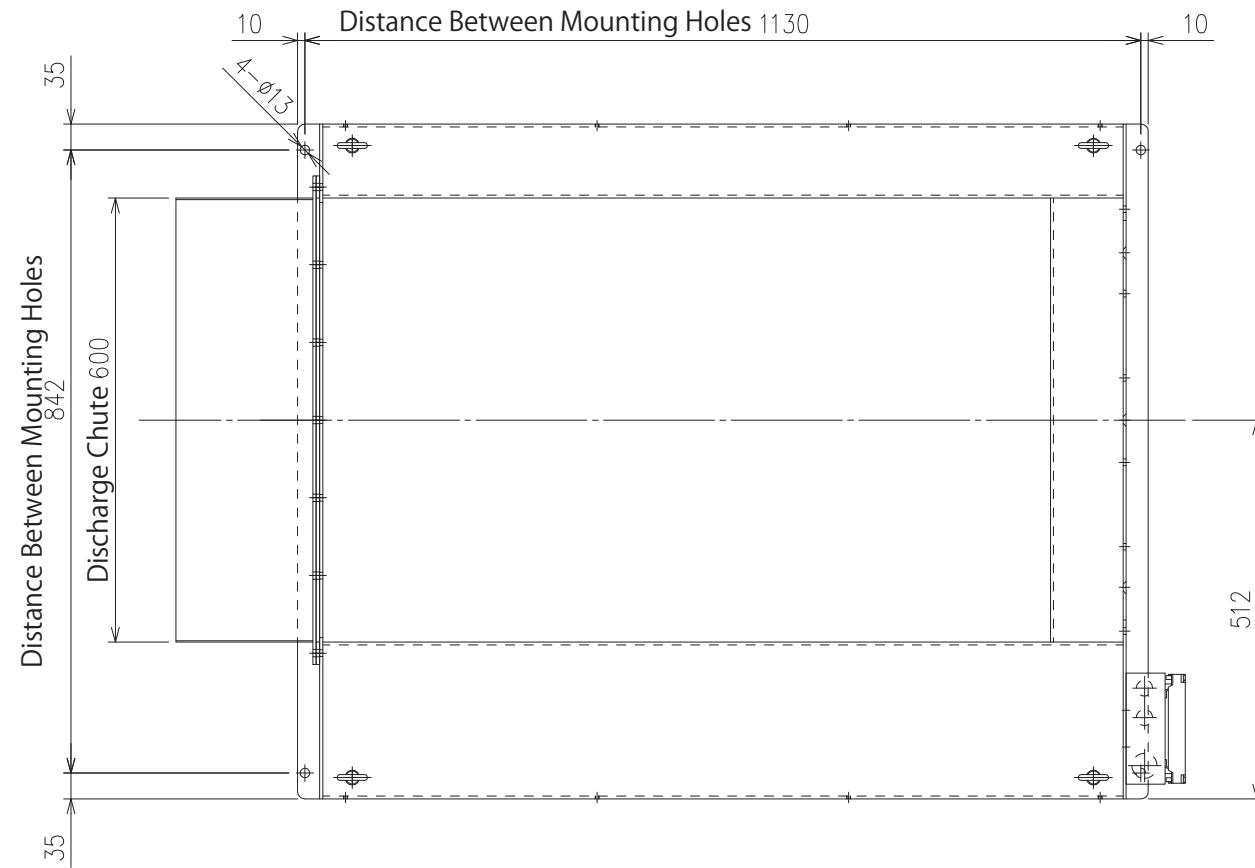


Outline of Terminal Box



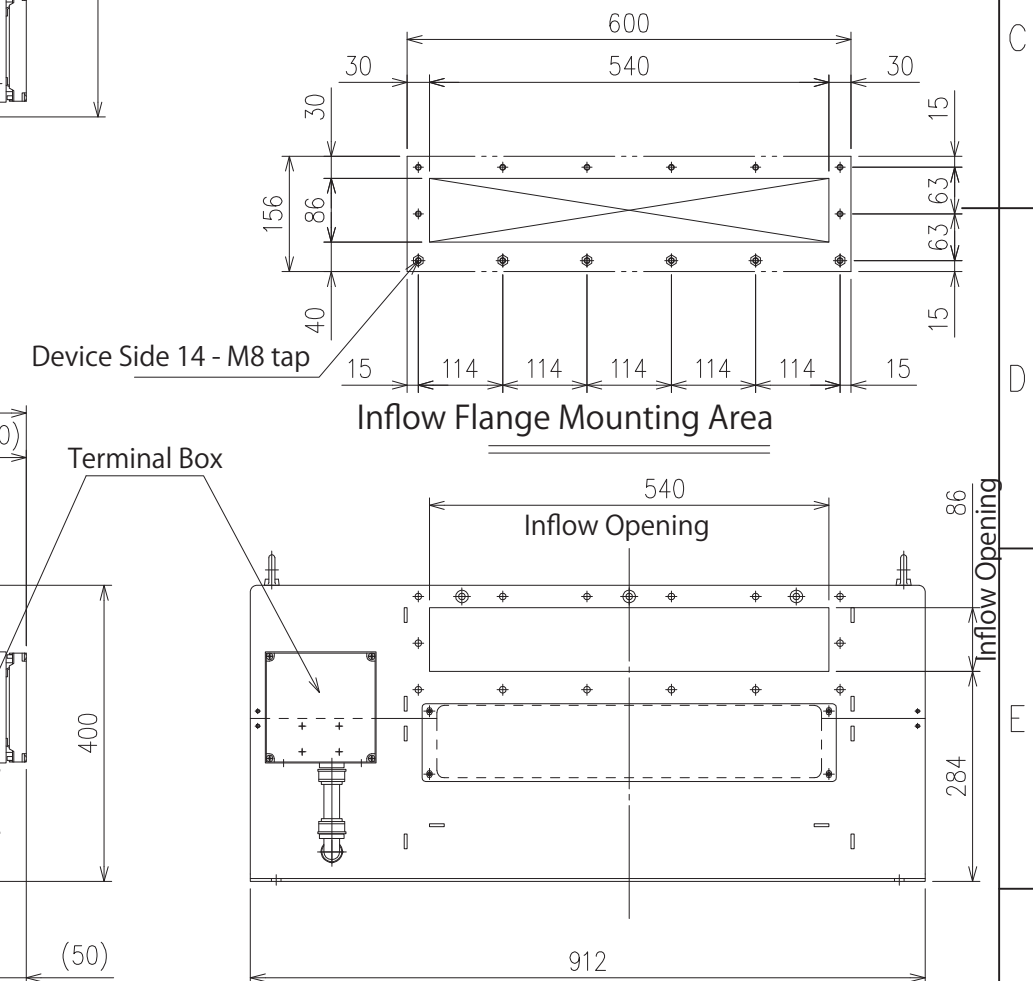
Grease Fittings



Specification		
Model	SS-612	
Casing	Material: SUS 304 Thickness: 4.0mm	
Rotating Shaft	Material: SUS 304	
Screen	Flow Passage Width	580mm
	Rotating Oval Plates	12 rows (Material: SUS301-CSP t0.5)
	Gap	1.0mm
Drive Unit	Fixed Flat Bars	3mm x 10mm
	Gear Motor	
	3φ 200V 0.4kW	
Drive Unit	Reduction Gear Ratio	1/150
	Revolution Speed	10.0r/min(50Hz), 12.0r/min(60Hz)
	Rated Current Value	2.35A(50Hz), 2.05A(60Hz)
	Class E Insulation, TEFC Outdoor Type	
	Painting Colour	Manufacturer Standard
Approx. Weight	240kg	

Caution: Do not reverse the motor rotation.

Drawing for Reference



The drawing is for reference only and subject to change without notice.

△	-	・	-	製図	-	-
△	-	・	-	設計	-	-
△	-	・	-	DESIGNED	-	-
△	-	・	-	検図	-	-
△	-	・	-	CHECKED	-	-
△	年月日	記事	訂正者	承認	-	-
MARK	DATE	CONTENT	REVISED	APPROVED	-	-



株式会社 研電社
KENDENSHA Co.,Ltd

品番/ITEM NO.	型式/MODEL	図面名称/DRAWING NAME	装置名称/UNIT NAME	単位 UNITS	尺度 SCALE	サイズ SIZE	変更回数 REV.
-	SS-612	Outline Drawing	Thickening Model	mm	1:10	A3	△
工番/JOB NO.	図面番号/DRAWING NO.	御客様社名/CLIENT	投影法 PROJECTION	年月日 DATE	2020-01-06		
-	-	-	第一角法	-	2020-01-06		