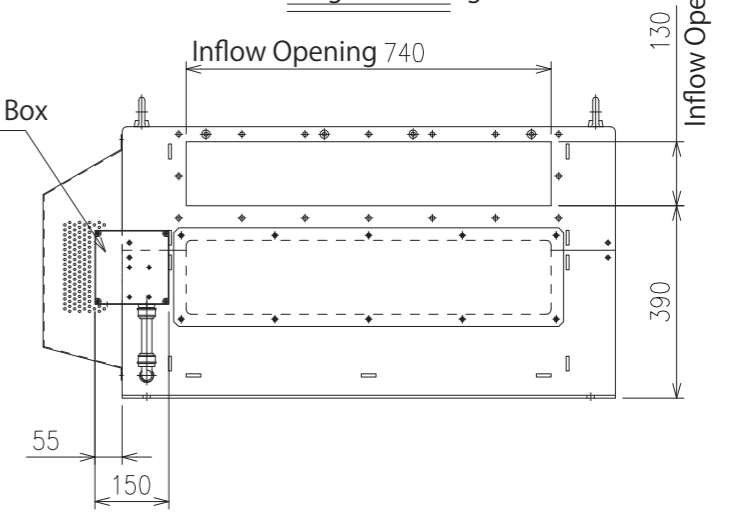
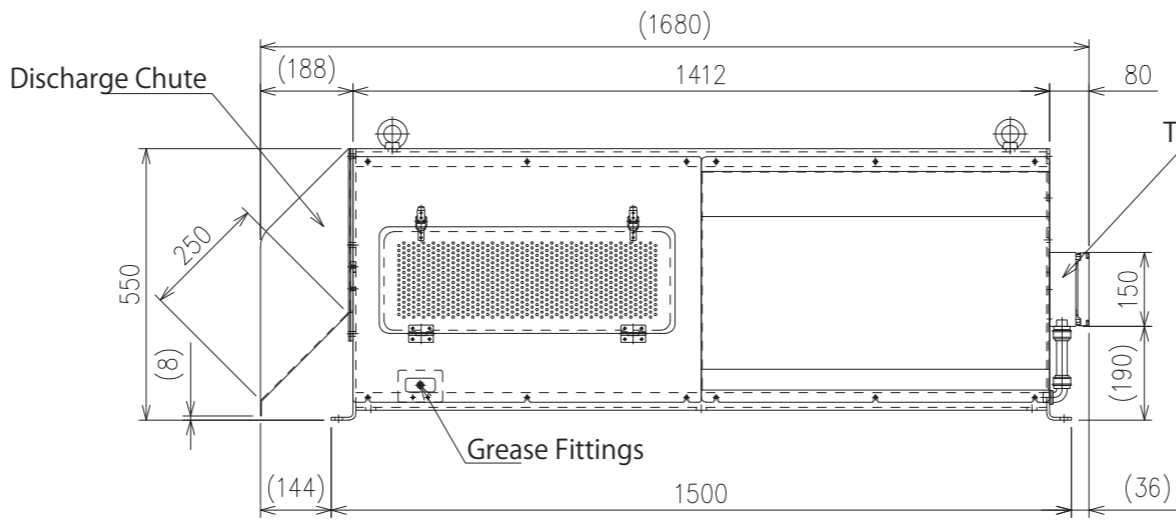
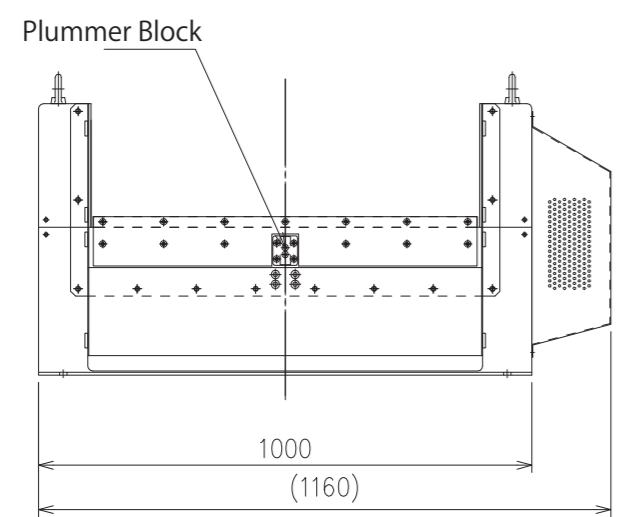
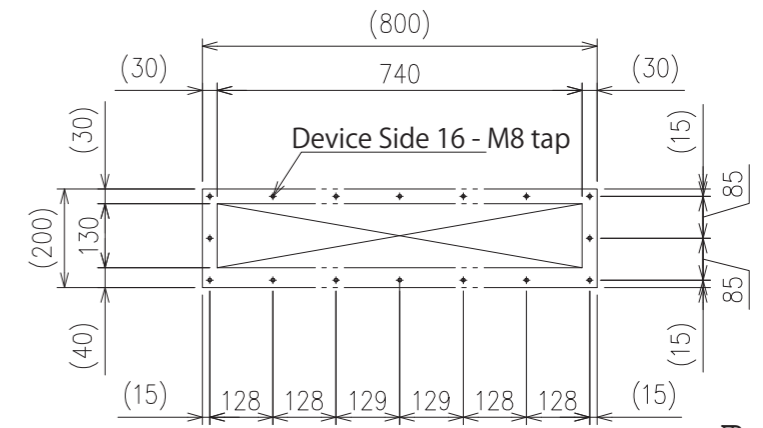


Specification	
Model	SS-812
Casing	Material: SUS 304 Thickness: 6.0mm
Rotating Shaft	Material: SUS 304 (27shafts)
Screen	Flow Passage Width 780mm
	Rotating Oval Plates 12 rows (Material: SUS301-CSP t0.5)
	Gap 1.0mm
Drive Unit	Gear Motor
	3φ 200V 0.75kW
	Reduction Gear Ratio 1/150
	Revolution Speed 9.6r/min(50Hz), 11.5r/min(60Hz)
	Rated Current Value 4.29A(50Hz), 3.73A(60Hz)
Class E Insulation, TEFC Outdoor Type	
Painting Colour : Manufacturer Standard	

Caution: Do not reverse the motor rotation.

Drawing for Reference



The drawing is for reference only and subject to change without notice.

△	-	・	-	製図	-	-
△	-	・	-	設計	-	-
△	-	・	-	検図	-	-
△	-	・	-	承認	-	-
記号 MARK	年月日 DATE	記事 CONTENT	訂正者 REVISED	承認 APPROVED	-	-



品番/ITEM NO.	型式/MODEL	図面名称/DRAWING NAME	装置名称/UNIT NAME	単位 UNITS	尺度 SCALE	サイズ SIZE	変更回数 REV.
-	SS-812	Outline Drawing	Thickening Model	mm	1:15	A3	△
工番/JOB NO.	図面番号/DRAWING NO.	御客様社名/CLIENT		投影法 PROJECTION	年月日 DATE		
-	-	-	-	第一角法	2021-01-06		